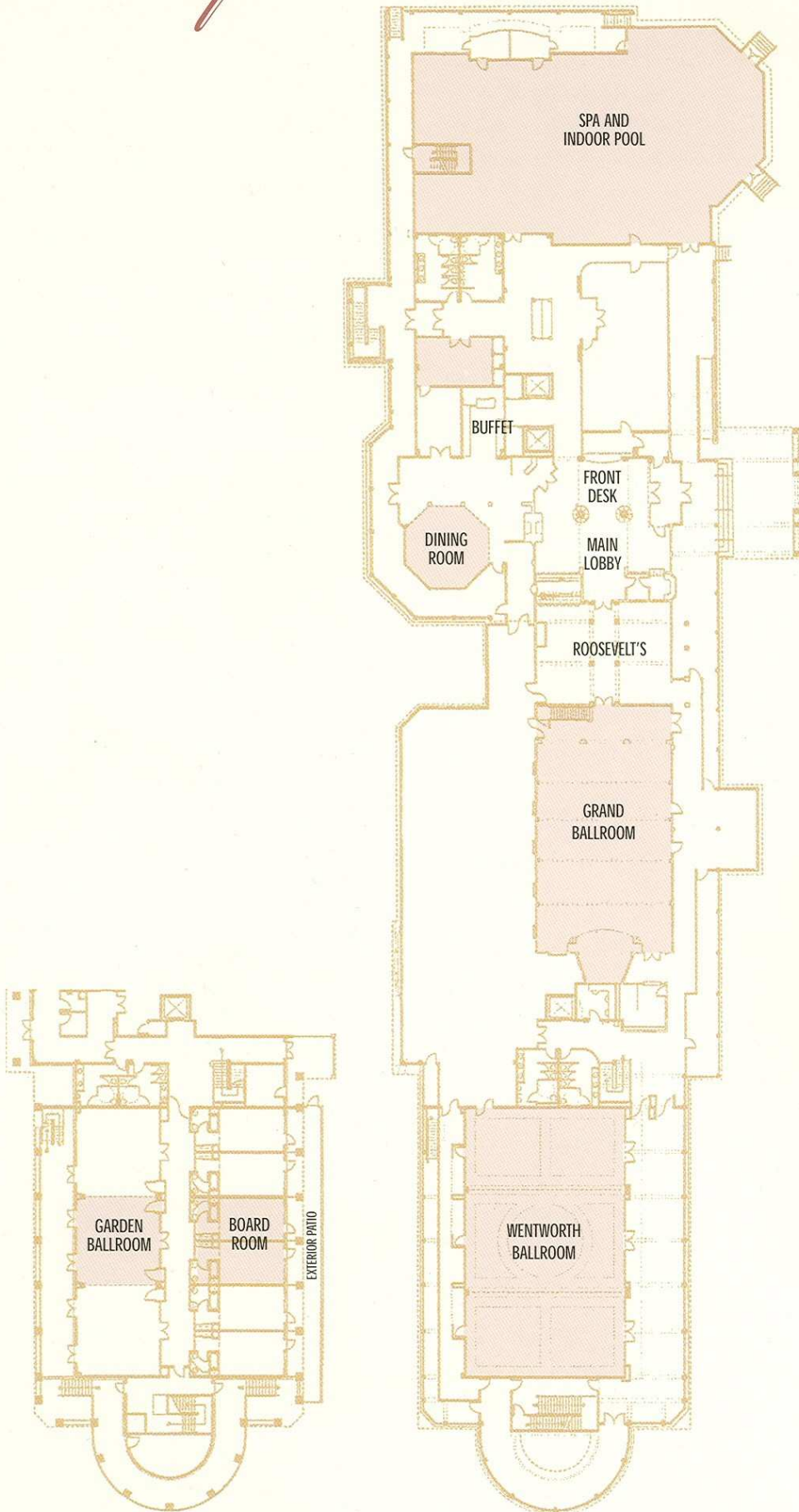


Floor plans



SPACE AND AMENITIES

- Over 12,000 square feet of Meeting Space
- Three Ballrooms plus 1,600 square feet of Pre-function space
- A formal Board Room and Private Dining Room
- Full audio/visual technology and equipment
- 161 Guest Rooms and Suites with ocean, harbor and garden views
- Three tri-level suites
- Eighteen 800 to 1,000 square-foot bi-level Oceanfront Suites
- Free high-speed Internet access throughout the hotel and in each guest room
- Room service and mini bar
- Three full-service restaurants
- Fitness Center
- 6,000 square-foot Spa
- Valet Parking
- Tennis and Golf
- Indoor and Outdoor Pool
- Full-service Marina
- Shuttle service to downtown Portsmouth